

Features of GT-1175

① For evacuation



In case of dangerous circumstances such as a fire or power outage due to earthquake, the door can be opened 90 degrees outwards singlehandedly to facilitate escape. GT-1175 is suitable for places with high visitor traffic such as airport, hospital, metro, high-speed railway station, shopping mall, supermarket and car store.

② For carrying bulky items



It is very useful in case of carrying large-sized items in events place, such as exhibition center, exhibition hall of shopping mall, car store and other places where vehicles and other large-sized items are displayed.

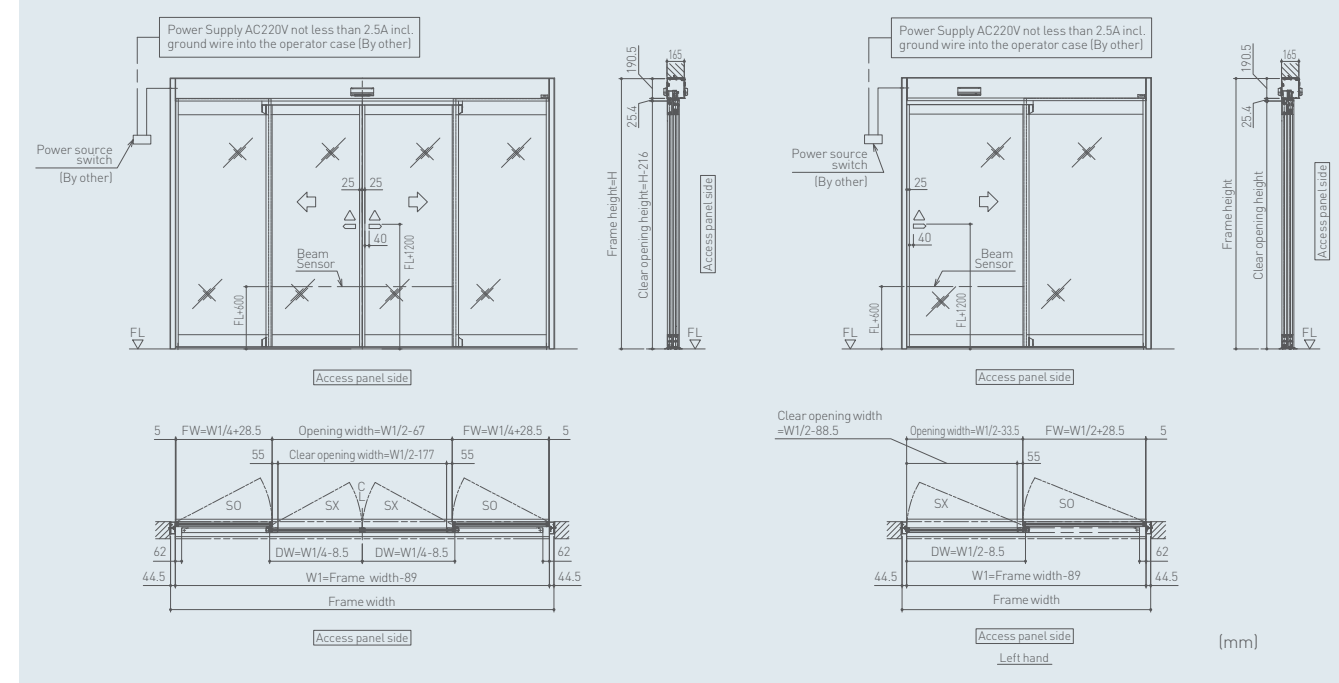
GT-1175BO-FO (SLM)

Reference

Slim frame / Sliding door with breakout function



Drawings



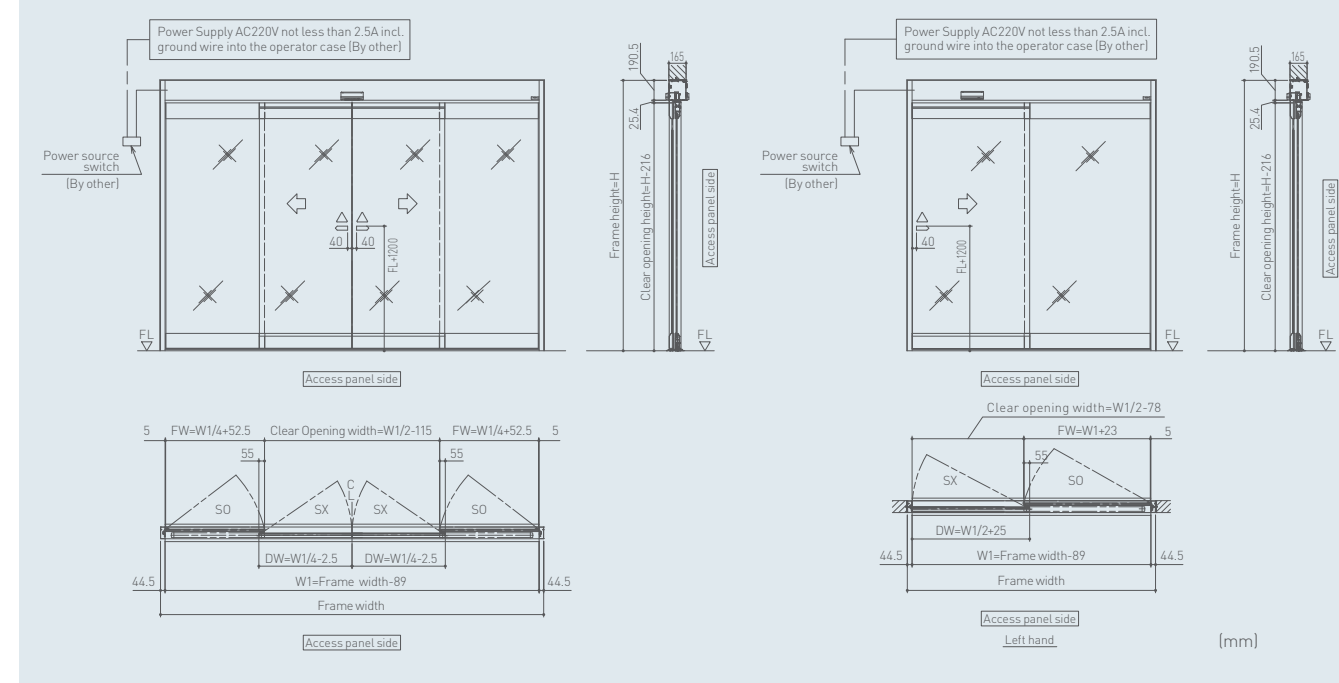
GT-1175BO-FO (AG)

Reference

Full-glass / Sliding door with breakout function



Drawings



GT-1175BO-TP

Reference

Robust frame / Telescopic door with breakout function



Drawings

